

# Shaking water baths

## Accessories for LSB12, LSB18 & OLS26

# Grant

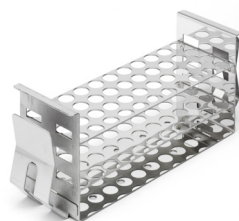
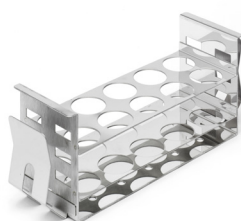
Accessories	OLS26	LSB12	LSB18
 <p>Universal tray - with adjustable springs. Highly versatile for a variety of vessel types.</p>	TU26	TU12	TU18
 <p>Flask / plate tray - with threaded holes to accept flask clamps or holder for deep well plates (<math>\geq 2\text{ml}</math>). See options below.</p>	TF26	TF12	TF18
 <p>Test tube tray - compatible with SR racks or can be used alone to accommodate bags and miscellaneous vessels. See rack options below.</p>	TS26 (holds up to 5 SR racks)	TS12 (holds up to 3 SR racks)	TS18 (holds up to 5 SR racks)
 <p>Base tray - perforated stainless steel, allows bath to be used as an unstirred bath.</p>	SBT26	SBT12	SBT26
 <p>Spare spring set - for use with universal tray. 10 short and 6 long springs.</p>	SSK		
 <p>Cooling coil - source of constant cooling to enable bath to be operated at or below ambient, down to <math>0^{\circ}\text{C}</math>. LS200 lid (with access hole for cooling coil) recommended.</p>	CC26	-	
 <p>Heat exchange coil - attach to a cold water supply or refrigerated circulator. Can be used down to <math>2^{\circ}\text{C}</math> above the temperature of the coolant. LS200 lid (with access hole for cooling coil) recommended.</p>	CW26	-	
 <p>Stainless steel lid, gabled.</p>	LS200	LU14	LU28
 <p>Replacement polycarbonate lid, clear, gabled.</p>	AQL26	AQL12	AQL26

### Flask clamps and plate holder



Part number	Description	TF12 Capacity	TF18 Capacity	TF26 Capacity
SC-25	for 25ml flask	18	33	28
SC-50	for 50ml flask	14	26	24
SC-100	for 100ml flask	9	17	15
SC-250	for 250ml flask	5	14	8
SC-500	for 500ml flask	4	6	6
SC-1000	for 1000ml flask	2	4	3
SH-DWP	for 1 x deep well plate (≥2ml)	2	4	4

### Test tube racks / microtube racks



Part number	Tube diameter (mm)	Rack capacity
SR-10	10	48
SR-13	13	44
SR-16	16	24
SR-19	19	21
SR-25	25	12
SR-30	30	10
Part number	Microtube size (ml)	Rack capacity
SR-SE	0.5	119
SR-LE	1.5	48

### Tray upgrade kit for previous shaking bath models GLS Aqua Plus and OLS200



Description	Part Number
Tray upgrade kit, allows TU12, TS12 & TF12 trays to be used with GLS Aqua 12 Plus (trays not supplied)	TUK12
Tray upgrade kit, allows TU18, TS18 & TF18 trays to be used with GLS Aqua 18 Plus (trays not supplied)	TUK18
Tray upgrade kit, allows TU26, TS26 & TF26 trays to be used with OLS200 (trays not supplied)	TUK26